

## The Art of Dancing.

The beginning of a *whole Turn*, or *turn quite round*, is more difficult to find out, because the *Circle*, which is the Mark of it, has neither beginning nor End: But it is nevertheless to be known by a *Point* plac'd on the side of the *Step*; from which *Point* the beginning being known, you make Use of the same Rules as above.

*A whole Turn to the Right.*



*A whole Turn to the Left.*



When a *Turn* is to be made but half a quarter round, it must be mark'd a quarter of a *Circle* on the side of the *Step*, without joining it to the *Step*.

*A half quarter Turn to the Left.*

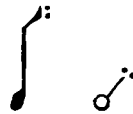


*A half quarter Turn to the Right.*



I have already shewn, that all *Steps* and half *Positions*, which have but one *Point* at either of their *Extremities*, signify either the pointing of the *Toe*, or placing the *Heel*, without the *Body's* bearing on it; but when there happens to be two *Points*, it then shews, that the *Body* must bear upon it.

*To bear the Body on the Toe.*



*To bear the Body on the Heel.*



Having explain'd all the before-mention'd *Marks*, I hope it will not be thought improper to shew when *Sinkings*, *Rifings*, *Springings*,