

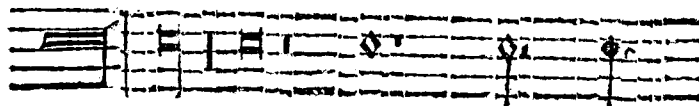
## Of Pauses, or Rests.

we terme a *Crotchet*, they term'd a *Semi Minime*, the halfe of our *Minime*, as the *Semibreue* is the halfe of the *Breue*. And these *Simple* and *Compound Notes* are they, which wee commonly call the *Inward signes* of *Measurable Musicke*.

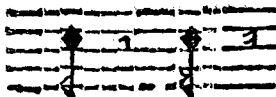
## Of Pauses, or Rests.

**P**auses, or Rests are silent *Characters*, or an *Artificiall* omission of the voyce, representing the *quantity* of the *Inward notes*, or *Signes*, as they are *Measured* by the *outward Signes*, which were Inuented for 3. causes. 1. For *Closes*, 2. for *Fuges*, 3. for avoyding of *Discords*, and difallowances.

*Examples of Inward signes and rests.*



*Large, Longe, Breue, Semi-breue, Minime, Crotchet,*



*Quaver, Semi-quaver.*

## Of Degrees.

**D**egrees were inuented to expresse the *value* of the afore-said principall *Notes*, by a *Perfect* and *Imperfect Measure*. *Perfect Measure* is when all goe by 3. *Imperfect Measure* when all go by 2. & *Degrees* are threc-fold:

1. *Moode*
2. *Time*
3. *Prolation.*

As all