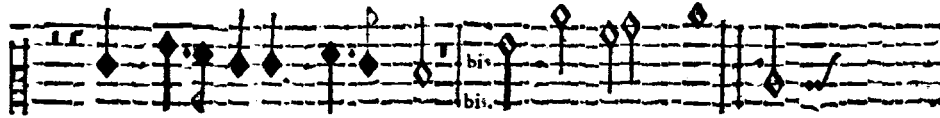
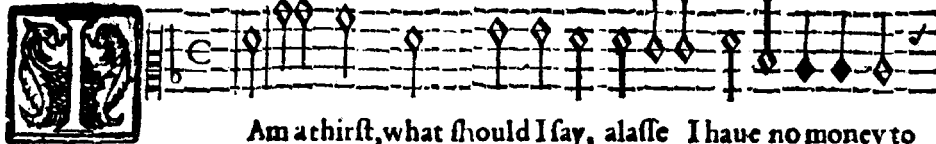


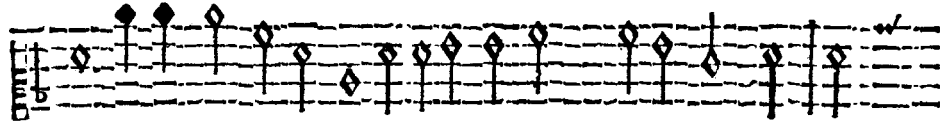
Amelend me a loafe .ii, from saturday to saturday



And longer if you longer may, Darne lend me a loafe. Dame *ut supra.*



Am a thirst, what should I say, alasfe I haue no money to



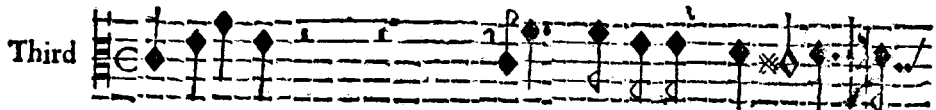
pay, fill the pot Butler, fill, fill, for I will drinke with a good will. I *ut supra*



Here lies a pudding in the fire, and my parte lies there-



in a: whome should I call in, O thy good fellowes and mine a.



Call in, call in,

O thy good fellowes and mine a. Ther

C 2

*ut supra.*