

*Of Great Diminution.* 13

finde Diuers, in *Church Songs, Madrigalls,* and such like as thus:

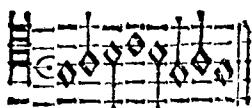


And diuers others there are bothin the *Perfect* and *Imperfect Measures*, all pertaying to the *Great Diminution*.

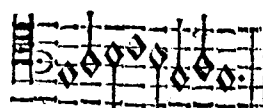
The *Externall Signes* are those which are set, at the beginning of *Songs*, and are the *Characters* of the *Degrees*, for the *Diminishing* of the *White* and *Blacke Notes*, by *Dash* and *Retort*, in the *Great* and *Lesse Motion* of the *Tact*.

The *Great Diminution* and the *Externall Signe* to signifie it in *White*, is by a retort of the *Semi-Circle* with the *Character* of *Prolation* thus

*Example.*



*Perfect Prolation*



*Great Diminution.*

Otherwise ioyning the *Externall* and the *Internall Signes* together, 'tis thus signified,



C 3

Whereas